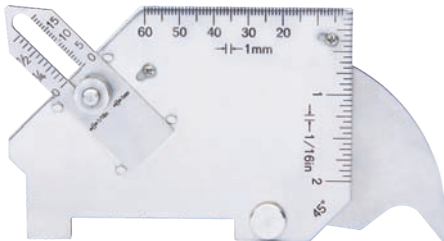


# COMPROBACIÓN MEDICIÓN SOLDADURA

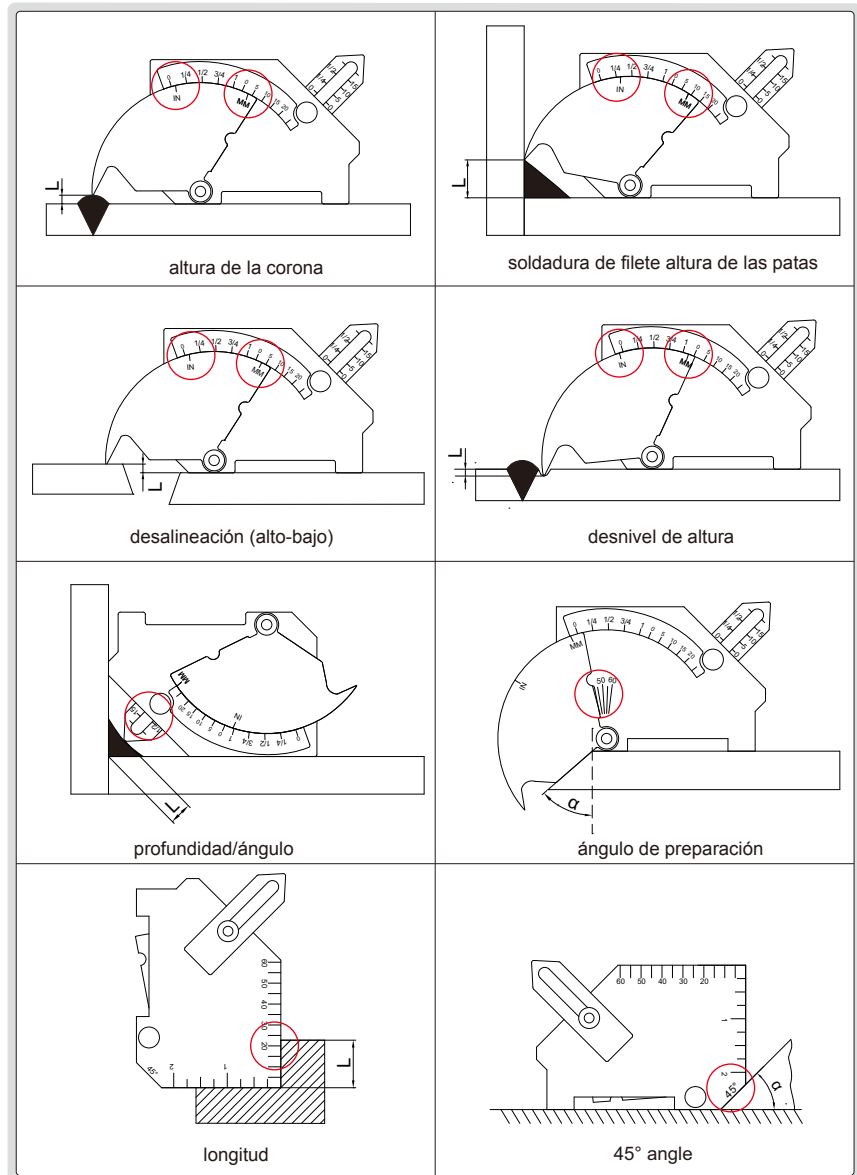


frontal



trasera

4835-1



- Escala ajustable para compensar el desgaste del punero
- Fabricado en acero inoxidable

| Código | Medición                | Rango               | Graduación  | Precisión |
|--------|-------------------------|---------------------|-------------|-----------|
| 4835-1 | crown height            | 0 - 25mm (0 - 1")   | 1mm (1/16") | ±0.5mm    |
|        | fillet weld leg height  | 0 - 25mm (0 - 1")   | 1mm (1/16") | ±0.5mm    |
|        | misalignment (high-low) | 0 - 25mm (0 - 1")   | 1mm (1/16") | ±0.5mm    |
|        | undercut depth          | 0 - 2mm (0 - 1/8")  | 1mm (1/16") | ±0.5mm    |
|        | fillet weld throat size | 0 - 20mm (0 - 3/4") | 1mm (1/16") | ±0.5mm    |
|        | angle of preparation    | 0 - 60°             | 5°          | ±1°       |
|        | length                  | 0 - 60mm (0-2")     | 1mm (1/16") | ±0.5mm    |
|        | 45° angle               | —                   | —           | ±1°       |

